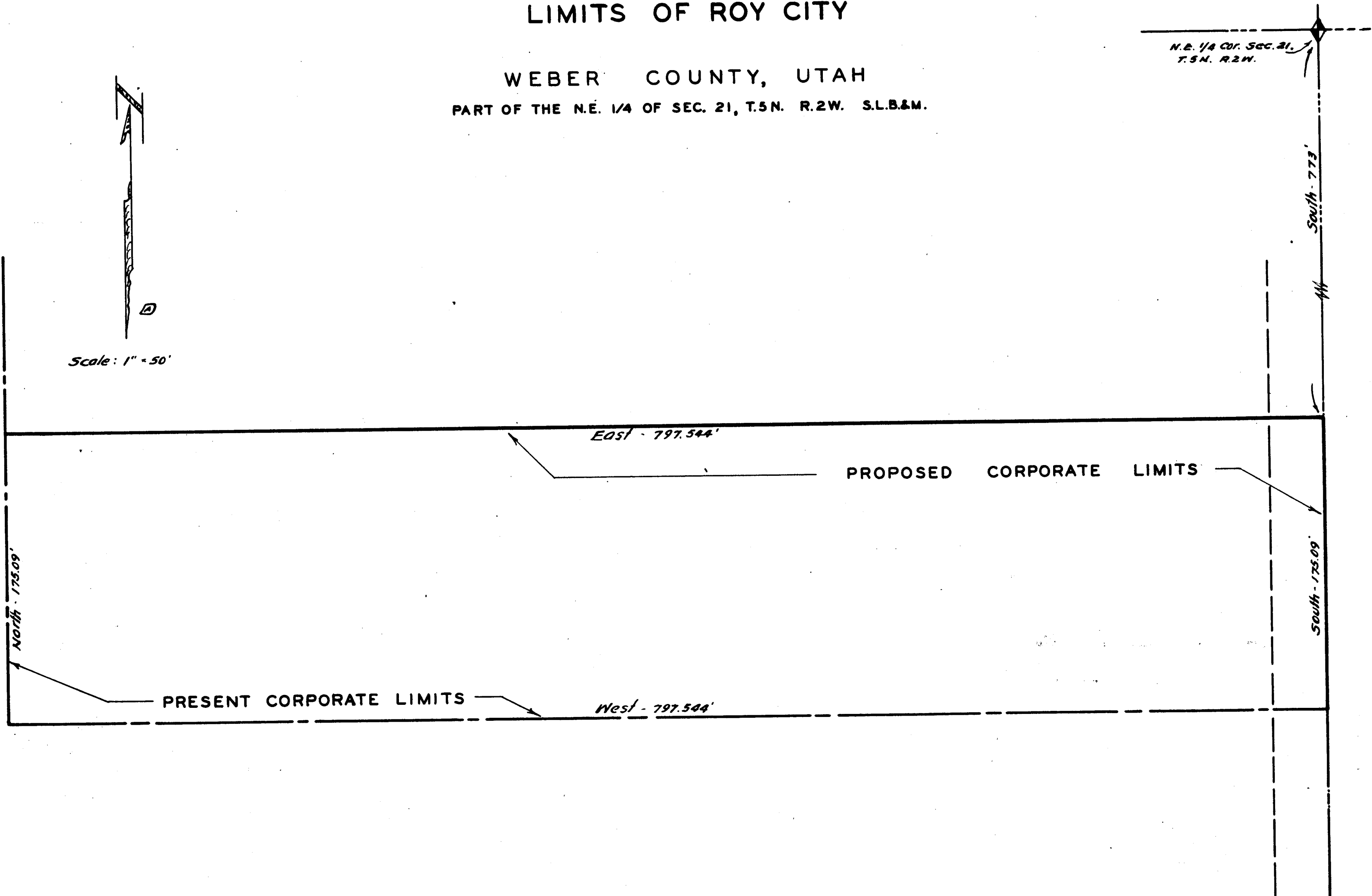


ANNEXATION PLAT  
PROPOSED CHANGES IN THE CORPORATE  
LIMITS OF ROY CITY

WEBER COUNTY, UTAH  
PART OF THE N.E. 1/4 OF SEC. 21, T.5N. R.2W. S.L.B.&M.

N.E. 1/4 Cor. Sec. 21,  
T.5N. R.2W.

Scale: 1" = 50'



DESCRIPTION

Part of the North East Quarter of Section 21, Township 5 North, Range 2 West, Salt Lake Base and Meridian, United States Survey; Beginning 775.00 feet South of the North East Corner of the South Half of the North East Quarter of Section 21, and running thence South 175.09 feet to the present Roy City limits and along said limits as follows; West 797.544 feet; North 175.09 feet; thence East 797.544 feet to the point of beginning.

ENGINEER'S CERTIFICATE

I, Fred W. Malan, a registered professional land surveyor in the State of Utah, License No. 1441, do hereby certify that this plat of the change in the corporate limits of Roy City, Weber County, Utah, has been drawn to the designated scale and is a true and correct representation of data compiled from the records on file at the Weber County Recorder's Office, and of a survey made under my supervision.

Signed this 7<sup>th</sup> day of Aug., 1957

*Fred W. Malan*



I hereby certify that this plat of the change in the corporate limits of Roy City was accepted by the Mayor and the City of Roy, Weber County, Utah, by a resolution on the \_\_\_ day of \_\_\_\_\_, 1957.

In witness whereof, I have hereunto set my hand and affixed the corporate seal of Roy City.

Recorder - Roy City, Utah

Approved this \_\_\_ day of \_\_\_\_\_, 1957.

Mayor - Roy City, Utah

Note Gave Lamar Nelson Simon  
on this Sat 12-3-57 M29-36  
Fred

417-111